

# Rotary®



## ***TIRE CHANGERS***

*ROTARY WHEEL SERVICE EQUIPMENT*



[www.rotarywheelservice.com](http://www.rotarywheelservice.com)

# R1200 LEVERLESS PRO

## PREMIUM CENTER LOCKING CHANGER

### AUTOMATIC LEVERLESS TIRE CHANGER WITH SYNCHRONIZED DUAL BEAD BREAKING ROLLERS

#### HUB MOUNTED, DUAL ROLLER SYSTEM REQUIRES NO TOOLS

There's no metal-to-metal contact with patented leverless mount / demount tool. Demount and mount the most challenging tire and wheel combinations.

#### 0-15 RPM VARIABLE SPEED TURNTABLE MOTOR

Exclusive inverter regulates rotational speed and slows as the stress on the bead increases, avoiding any damage to the tire.

#### STANDARD with THE R1200

- Integrated pneumatic wheel lift
- 3-position pedestal with self-locking plate - handle wheels with a 10" to 30" diameter
- Quick-lock rim clamping device with guard
- Easy to use 2-button controls
- Centering adapter / double conic
- Rubber turntable guard
- Pin protectors for centering pulling unit
- Power-assisted press arm seats bead to rim
- Foot pedal controls for inflation, rotation and wheel lift
- Inflation station
- Storage cabinet
- Tire paste lubricant and brush

#### OPTIONAL ACCESSORIES

##### VSG1000A158

Universal flange for reverse, and Chrome Clad wheels

##### VSG1000A152

Light truck adapter for centering locking tire changer - 19.5" wheels

##### VSG1000A102

5 stud kit 110mm long for reverse rims. Used on VSG1000A158

##### VSG1000A86

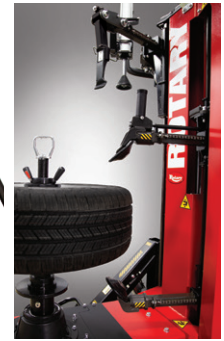
Re-positionable side mirror



**EASY TIRE MOUNTING** with plastic tool, dual rollers and power-assisted top bead press arm.



SCAN CODE FOR PRODUCT VIDEO



#### DUAL BEAD-BREAKING ROLLERS

Accurate and easy positioning and operation of both rollers and mount / demount tool.

#### R1200 LEVERLESS PRO services:



Optional equipment may be required

TECHNICAL DATA	R1200
Handle wheels from*	10"-26" / 12"-28" / 14"-30"
Maximum wheel width	19"
Maximum wheel diameter	45"
Bead breaker power (each arm)	2,645 Ft/L lbs
Bead breaker movement	Automatic / Manual indent
Rotation motor	2Hp / 1,5 Kw inverter
Recommended air supply	115-145 PSI / 8-10 bar
Power supply	220v / 1Ø / 60 Hz

\* 3-position base can be adjusted to fit larger wheels up to 30"

# R1150 LEVERLESS

## LEVERLESS, HUB MOUNTING CHANGER REQUIRES NO TIRE TOOL

Service the most challenging tire and wheel combinations - low profiles, runflats, exotic rims and other specialty jobs. No metal to metal contact with leverless mount / demount tool.

Change difficult light truck combinations such as 17.5" and 19.5" super duty wheels using optional centering adapter VSG1000A152.

#### 0-15 RPM VARIABLE SPEED TURNTABLE MOTOR

Exclusive inverter regulates rotational speed and slows as the stress on the bead increases, avoiding any damage to the tire.

#### STANDARD with THE R1150

- Quick locking wheel centering adapter
- Locking system suitable for reverse rims
- Easy to 2-button controls for roller position
- Integrated pneumatic wheel lift
- Pedal operated inflation with side bead blaster
- Full range of bead clamps and adapters
- Double cone
- Tire paste lubricant and brush

#### OPTIONAL ACCESSORIES

##### VSG1000A158

Universal flange for reverse, and Chrome Clad wheels

##### VSG1000A152

Light truck adapter for centering locking tire changer - 19.5" wheels

##### VSG1000A102

5 stud kit 110mm long for reverse rims. Used on VSG1000A158

##### VSG1000A118

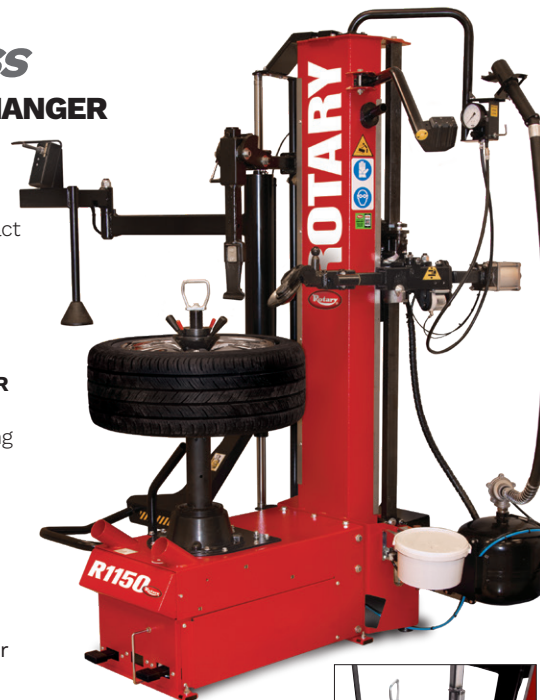
Match mounting roller

##### VSG1000A135

Bead breaker

##### VSG1000A86

Reposition-able mirror



#### EASY ROLLER BEAD-BREAKING FEATURE

Automatic roller side-movement with memorized position for bead breaking lower side of tire.



SCAN CODE FOR PRODUCT VIDEO

#### R1150 LEVERLESS services:



Optional equipment may be required

TECHNICAL DATA	R1150
Handle wheels from*	10"-26" / 12"-28" / 14"-30"
Maximum tire width	15"
Maximum tire diameter	45"
Bead breaker power (each arm)	2,645 Ft/L lbs
Bead breaker movement	Automatic
Rotation motor	2Hp / 1,5 Kw inverter
Recommended air supply	115-145 PSI / 8-10 bar
Power supply**	220v / 1Ø / 60 Hz

\* 3-position base can be adjusted to fit larger wheels up to 30"

\*\*SHIPS WITH NEMA L6 - 20 PLUG



**EASY TIRE MOUNTING** with plastic tool, roller and rotating helper arm.

# R247D.CL CENTER LOCKING

## HIGH VOLUME SWING ARM CHANGER

Easy to use center post mounting design increases productivity and reduces the risk of wheel damage. Comes standard with metal and plastic mounting and demounting heads.

The double-acting bead breaker cylinder is designed to work on low-profile and large steel or alloy rims.

### VARIABLE SPEED CONTROL INVERTER

Avoid any tire damage by slowing rotational speed as the stress on the bead increases.

### FEATURES

- Quick locking wheel centering system
- Integrated wheel lift
- Lower bead lifting roller
- Pneumatic top bead pressing tool
- Hand controlled side bead breaker
- Powerful 220v drive motor
- Storage cabinet
- Tire paste lubricant and brush

### OPTIONAL ACCESSORIES

#### VSG1000A158

Universal flange for reverse, and Chrome Clad wheels

#### VSG1000A152

Light truck adapter for centering locking tire changer - 19.5" wheels

#### VSG1000A102

5 stud kit 110mm long for reverse rims. Used with VSG1000A158

#### VSG1000A11

Bead tire lever

#### VSG1000A18

Bead pushing roller

### STANDARD PLASTIC TOOL HEAD

#### VSG800A60

Tool with support



INTEGRATED WHEEL LIFT

### R247D.CL services:



Optional equipment may be required

TECHNICAL DATA	R247D.CL
Rim clamping	10"-30"
Maximum rim width	15"
Maximum tire diameter	47"
Max. bead breaker opening	15"
Bead breaker cylinder power at 145 psi	6,745 LBS
Rotation motor	2Hp / 1,5 Kw inverter
Recommended air supply	115-145 PSI / 8-10 bar
Power supply*	220v / 1Ø / 60 Hz VARIABLE SPEED

\*SHIPS WITH NEMA L6 - 20 PLUG

# R145DR

## AUTOMATIC TILTBACK CHANGER

High performance, top-of-the-range tire changers model with double-acting bead breaker cylinder.

Designed for low-profile and large-sized steel or alloy rims. Works on any wheel up to a maximum width of 17".

### FEATURES

- 2 position centering lock / 10"-26" range
- Hand controlled bead breaker
- Double synchronization for load distribution
- Adjustable tool guide for alloy rim protection
- Bolt caps to prevent hooking of air hoses
- Integrated helper arm included
- Lower bead lifting roller
- Pneumatic top bead pressing tool
- Filter / Tire paste lubricant and brush

### Invertor 0-16 Variable Speed Control Feature

Designed with an innovative electrical motor inverter, techs are able to regulate the chucking table rotation speed to reduce the stress on the bead to avoid any damage to the tire. 220V drive motor.

### STANDARD ACCESSORIES

#### VSG800A117 (2 x kit)

Tool protection kit for metal mount / demount head

#### VSG800A6 (24" - 26")

Clamp Protectors (4 pcs)

#### VSG800A26

Blade with adjustment inclination. Allows to break the bead at the correct angle. 145D Model.

#### VSG800A11 Qty. of 1

Bead breaker protection

#### VSG800A11K Qty. of 5

### OPTIONAL ACCESSORIES

#### VSG800A107 Fast Fit Motorcycle Adapters

+ 5" from outside

#### SMALL WHEEL ADAPTER VSG800A11

Reduces clamping capacity to 8" for ATVs and lawn equipment tires. - requires VSG800A107 wheel clamps

### STANDARD PLASTIC TOOL HEAD

#### VSG800A126

Tool with support



TILTBACK CHANGER with helper arm



SCAN CODE FOR PRODUCT VIDEO

### R145DR services:



Optional equipment may be required

TECHNICAL DATA	R145 / R145DR
Chuck rotation speed (rev/min)	0-16 rpm / 7,3 rpm (D version) 7,3 rpm (110v version)
Maximum torque to chuck	885 Ft/Lbs (1200 Nm)
Self-centering lock: external	10"- 26"
Self-centering lock: internal	12"- 28,5"
Tool working span	8"- 32"
Maximum tire diameter	45" (1143mm)
Maximum tire width	17" (431mm)
Bead breaker cylinder power at 145 psi	6,745 Ft/L lbs (3060 kg)
Power supply* (Model 145DR) Motor	220v / 1Ø / 60 Hz / 1 Hp

\*SHIPS WITH NEMA L6 - 20 PLUG

# R146RP SUPER SWINGARM PRO MAX

## HIGH PERFORMANCE / EXTRA-HEIGHT SPEEDCHANGER

The hand controlled R146RP SUPER includes an air-driven PLUS91SA HELPER ARM. This bead top pressing and tire lifting device for large and special tires features a lower bead lifting roller and pneumatic top bead pressing tool.

NOTE: PLUS91SA IS NOT INSTALLED PRIOR TO DELIVERY

### FEATURES

- Hand controlled, double-acting bead breaker
- Extra large 46" frame
- 110v drive motor supplies needed torque
- Air tank located in column
- Gear box is supported by steel plates to avoid flex
- Removable pedal assembly for easy maintenance
- Valve tray
- Tire paste lubricant and brush

### STANDARD R146R SUPER ACCESSORIES

**BEAD PUSHING ROLLER VSG800A59**  
For PLASTIC mount / demount head



**BEAD PUSHING ROLLER VSG800A18**  
For METAL mount / demount head



**STORAGE TRAY VSG800A77**  
Column mounted



### WHEEL LIFT ATTACHMENT VSG800A69

Works with PLUS91SA helper arm to safely lift tire and wheel assemblies

SHOWN:  
PLUS91SA HELPER ARM



Demounting lower bead



SHOWN:  
R146RPS

### STANDARD R146R SERIES ACCESSORIES

**PLASTIC TOOL HEAD VSG800A60** Tool head with support



**VSG800A117** Tool protection kit for metal mount / demount head (2 x kit)

**VSG800A6** Clamp Protectors / 24" - 26" (4 pcs)

**VSG800A11** Bead breaker protection / Qty. of 1  
**VSG800A11K** / Qty. of 5

### OPTIONAL ACCESSORIES

**VSG800A107 Motorcycle Adapters**  
+ 5" from outside



### SMALL WHEEL ADAPTER VSG800A111KIT

Reduces clamping capacity to 8" for ATVs and lawn equipment tires.  
- requires VSG800A107 wheel clamps



### ADDITIONAL R146 SERIES SWINGARM MODELS

**R146R** Base Model / Electric Motor

**R146RA** Base Model / Air Motor

**R146RP** Base Model / Electric Motor with Helper Arm

**R146RAP** Base Model / Air Motor with Helper Arm

**R146RAPS** Base Model / Air Motor with Helper Arm with additional super accessories package



SCAN CODE FOR  
R146 PRODUCT  
VIDEO

R146R Series services:



Optional equipment may be required



SHOWN:  
R146R

TECHNICAL DATA	R146 SERIES
External clamping	10" - 26"
Maximum torque to chuck	885 Ft/L bs (1200 Nm)
Internal clamping	12" - 28.5"
Max. tire diameter	45" (1143 mm)
Max. tire width	15" (380 mm)
Max. bead breaker opening	15" (380 mm)
Bead breaker cylinder power at 145 psi	6,745 Ft/L lbs (3060 kg)
Power supply	110v / 1Ø / 60 Hz

# R140i SWINGARM SHOP

## TOP QUALITY / ENTRY LEVEL PRICE

Heavy duty swing arm structure with exclusive 110v single speed motor provides needed torque and the rigid self-centering chuck with wide clamping range handles a variety of needs. Equipped with galvanized, double-operating bead breaker cylinder.

### FEATURES

- Tire Diameters of 40"
- 22" Outside Clamping
- 24" Inside Clamping
- Removable pedal assembly for easy maintenance
- Tire paste lubricant and brush

### OPTIONAL UPGRADE PLUS91N HELPER ARM

Bead top pressing and tire lifting device for large and special tires.



### STANDARD PLASTIC TOOL HEAD VSG800A60

Tool head with support



### OPTIONAL ACCESSORIES

#### MOTORCYCLE WHEEL CLAMPS VSG800A99

+ 5" from the outside for 20" - 22" tables

#### VSG800A111 SMALL WHEEL ADAPTER

Reduces clamping capacity to 8" for ATVs and lawn equipment tires. Use with rim clamp tire changers only - requires VSG800A99 wheel clamps.

#### R140i Series services:



Optional equipment may be required

TECHNICAL DATA	R140i
External clamping	11" - 22"
Internal clamping	13" - 24.5"
Max. tire diameter	40.5" (1030 mm)
Max. tire width	12" (305 mm)
Max. bead breaker opening	15" (380 mm)
Bead breaker force	6,745 Ft/L lbs (3060 kg)
Rotation speed	7.3 rpm
Max. torque turntable	885 Ft/L lbs (1200 Nm)
Power supply	110v / 1Ø / 60 Hz

## HEAVY DUTY CHANGERS

# R501PLUS

## SPEEDCHANGER HD

### SUPER FAST TIRE CHANGER

Dismount and mount a truck tire in 30 seconds with 4 roller system

**Simple tire dismounting:** front bead-breakers keep the bead in the drop center while rear breakers continue their course until dismounting is complete.

**Four roller system positioned on both sides of the wheel in opposite positions** are supported by two separately controlled arms and each has two rollers - one conical which pushes on the bead and one cylindrical which pushes the side of the tire.

### FEATURES

- Adjustable arm position
- Quick loading
- Hydraulic clamping / chucking table
- Stand-by function - no noise when not in operation
- Hydraulic controls
- Tire paste lubricant and brush



#### STANDARD CLAMP PROTECTOR VSG108A2

Protects aluminum wheels / 4x kit



VSG108A3 Tire Lever

### OPTIONAL ACCESSORIES



VSG90A6 Aluminum rim clamp

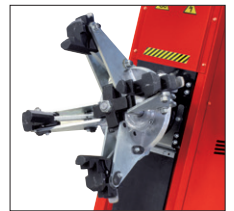


VSG108A22 Disc for wheels with lock ring



### HYDRAULIC CLAMPING

4" (90mm)  
Min. clamping  
13" (330mm)  
Min. height



**SERVICE TIRE DIAMETERS UP TO 52"**



SCAN CODE FOR PRODUCT VIDEO

#### R501 PLUS services:



Optional equipment may be required

TECHNICAL DATA	R501PLUS
Chucking unit rotation motor	2.7 Hp / 2 kW
Hydraulic drive unit motor	1 Hp / 1.5 kW
Maximum tire diameter	52" (1320mm)
Max. tire width	21" (540mm)
Bead breaker power	13,300 Ft / LLbs / 18000 N
Maximum assembly weight	2,645 lbs / 1200 kg
Chuck rotation speed (rev/min)	8
Max. torque to chuck	585 Ft/L lbs / 2600 Nm
Power supply	220v / 3Ø / 60 Hz

# R560 MOBILE HD

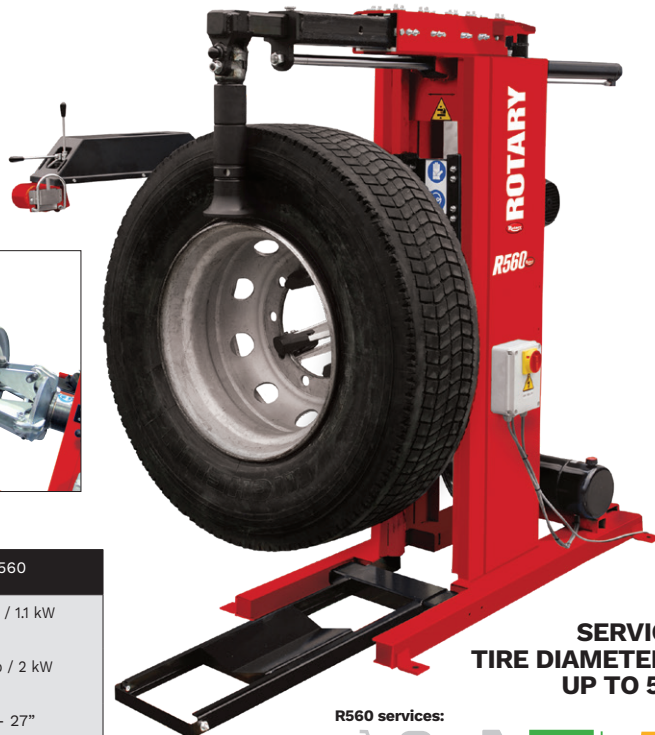
## WORKSHOP SERVICE

### Easy to use changer.

This easy-to-use changer is designed for closed vans or small workshops. Controls are protected on changer console and the hydraulic clamping and chucking table are suitable for agricultural tires with optional VSG108A22 wheel disc.



STANDARD ROLLER for tubeless tires



**SERVICE TIRE DIAMETERS UP TO 51"**

R560 services:



Optional equipment may be required

### FEATURES

- Hydraulic clamping / chucking table
- Hydraulic up / down movement
- 4" minimum clamping - 13" minimum height
- Tire paste lubricant and brush



**STANDARD CLAMP PROTECTOR VSG108A2**  
Protects aluminum wheels / 4x kit



**STANDARD BEAD LEVER VSG108A3** Tire Lever



SCAN CODE FOR PRODUCT VIDEO

TECHNICAL DATA	R560
Chucking unit rotation motor	1.5 Hp / 1.1 kW
Hydraulic drive unit motor	2.7 Hp / 2 kW
Rim diameter	11" - 27"
Maximum tire diameter	51" (1300mm)
Max. tire width	37.4" (950mm)
Bead breaker power	3,597 Ft/L lbs / 16000 N
Max assembly weight	2,645 lbs (1200 kg)
Chuck rotation speed (rev/min)	6.5
Max. torque to chuck	1253 Ft/Lbs (1700 Nm)
Power supply*	220v / 1Ø / 60 Hz

### OPTIONAL ACCESSORIES



**VSG90A6**  
Aluminum rim clamp



**VSG108A22**  
Disc for wheels with locking ring

# R511 COMMERCIAL HD

## SUPER DUTY CHANGER

SERVICE TRUCK, BUS, SUPER SINGLE, AGRICULTURAL and LOCK RING

The operating dimensions of the clamping unit and the head-tool carriage of this changer allows it to service a wide range of wheels. The controls enable users to regulate the speed of the tool holding carriage with lever type hydraulic distributions.

### FEATURES

- Rotational control on portable wired stand
- Cable control unit
- Quick locking manual rotation tool
- Patented VSG108A3 bead lever
- Tire paste lubricant and brush

R511 services:



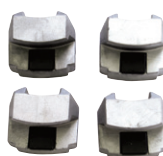
Optional equipment may be required

TECHNICAL DATA	R511
Chucking unit rotation motor	3 Hp / 2.2 kW
Hydraulic drive unit motor	1 Hp / .75 kW
Rim diameter	11" - 27"
Maximum tire diameter	64" (1640mm)
Maximum tire width	36.4" (925mm)
Chuck rotation speed (rev/min)	8
Power supply*	220v / 1Ø / 60 Hz



**HYDRAULIC CLAMPING**  
4" (90mm) Min. clamping  
13" (330mm) Min. height

**SERVICE TIRE DIAMETERS UP TO 64"**



**VSG108A2**  
Standard clamp protections for alloy rims / 4 x kit



**STANDARD BEAD LEVER VSG108A3** Tire Lever



**QUICK MANUAL ROTATION**



# R541 COMMERCIAL HD

## SINGLE CARRIAGE MOVEMENT

ELECTRO-HYDRAULIC CHANGER FOR TRUCKS, AGRICULTURAL AND EARTHMOVING VEHICLES

The two-speed rotation chucking table can accommodate rims up to 44" and up to 56" with VSG108A12 extensions set.



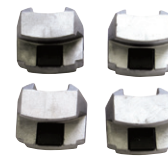
SERVICE TUBE and TUBELESS TIRES



HYDRAULIC ARM MOVEMENT

### FEATURES

- Double ratcheting locking arm
- Rotational control on portable stand
- Tire paste lubricant and brush



**VSG108A2**  
Standard clamp protections for alloy rims / 4 x kit



**VSG108A3** Tire Lever

#### R541 services:



Optional equipment may be required

TECHNICAL DATA	R541
Chucking unit rotation motor	1.75 Hp / 1-1.3 kW
Hydraulic drive unit motor	2.95 Hp / 2.2 kW
Rim diameter	11" - 43"
With VSGA108A12 adapters	44" - 56"
Maximum tire diameter	90.5" (2300mm)
Maximum tire width	51" (1300mm)
Chuck rotation speed (rev/min)	4-8
Power supply	220v / 3Ø / 60 Hz



SERVICE TIRE DIAMETERS UP TO 90"

# R573 EXTREME HD

## SPECIAL ORDER TIRE CHANGER FOR EXTREME WHEEL DIMENSIONS

ELECTRO-HYDRAULIC CHANGER FOR TRUCKS, AGRICULTURAL AND EARTHMOVING VEHICLES

#### HIGH BEAD BREAKING FORCE

Easy tire mounting and demounting

#### MULTIPLE ADJUSTABLE GUIDES

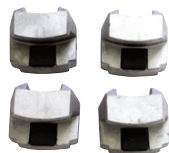
Control rotation to avoid tire damage

#### STAND-BY FUNCTION

After 5 seconds the motor will turn off if not in use

### FEATURES

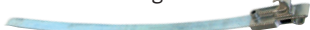
- Console cable control unit with metal sheath
- Double speed table rotation
- Quick locking manual rotation tool
- VSB530800 long bead lifting lever
- VSG108A25 clamp for earthmoving wheels
- Tire paste lubricant and brush



**VSG108A2**  
Standard clamp protections for alloy rims / 4 x kit

#### OPTIONAL ACCESSORIES

**VSG108A13** Rings Lever



**VSG108A3** Tire Lever



SERVICE TIRE DIAMETERS UP TO 106"

#### AUTOMATIC LIFTING and ROTATION



Portable, rotational control stand

#### HYDRAULIC CLAMPING

4" (90mm) min. clamping  
13" (330mm) min. height  
Service 19" and 22.5" truck wheels

#### Oversized chucking dimension

allows reach to 50" wheels without extensions. Access wheels from 51" to 60" with optional VSG108A39 adapter extensions kit.



## R573BT Cordless Controls Communicates via Bluetooth® transmission

SPECIAL ORDER ONLY / Contact factory for details

#### R573 services:



Optional equipment may be required

TECHNICAL DATA	R573
Chucking unit rotation motor	2.95 Hp / 2.2 kW
Hydraulic drive unit motor	3.35 Hp / 2.5 kW
Rim diameter	11" - 50"
With VSGA108A39 adapters	51" - 60"
Maximum tire diameter	106" (2700mm)
Maximum tire width	69" (1750mm)
Chuck rotation speed (rev/min)	1- 5 - 10
Power supply	220v / 3Ø / 60 Hz

### OPTIONAL COMMERCIAL HD TIRE CHANGER ACCESSORIES

**VSG90A6** Clamp for alloy wheels

**VSG108A25** Clamp for steel wheels

**VSB530800** Long bead lifting lever

**VSG108A34** Pneumatic bead pushing device



Rotary's line of premium equipment is manufactured to the highest standards of quality and durability to help you perform the job right the first time, every time.

Offer your customers top quality tire and wheel service by putting Rotary to work for you.

### Rotary Wheel Service Equipment

2700 Lanier Drive / Madison, IN 47250, USA

[www.rotarywheelservice.com](http://www.rotarywheelservice.com)



**Sales:**

1.812.273.1622 / 800.445.5438  
insidesales@vsgdover.com

**Government Sales:**

800.445.5438 X5655

**For additional information:**

[rotarylif.com/Government-Purchasing-Assistance/](http://rotarylif.com/Government-Purchasing-Assistance/)



**Tech. Support:**

800.445.5438  
technicalsupport@rotarylif.com

Lit# Rotary Wheel Service Changers Brochure.2024.03

©2024 VEHICLE SERVICE GROUP\*, Printed in U.S.A. All Rights Reserved. Unless otherwise indicated, ROTARY\*, VEHICLE SERVICE GROUP\*, DOVER and all other trademarks are property of Dover Corporation and its affiliates.

Product specifications, part numbers, images and component descriptions are subject to change without notice or liability.



**All Rotary Wheel Service Equipment carries an industry-leading 3 year warranty.**

See website for details.