

Rotary®



TIRE CHANGERS

ROTARY WHEEL SERVICE EQUIPMENT



www.rotarywheelservice.com

R1200 LEVERLESS PRO

PREMIUM CENTER LOCKING CHANGER

LEVERLESS TIRE CHANGER WITH SYNCHRONIZED DUAL BEAD BREAKING ROLLERS

HUB MOUNTED, DUAL ROLLER SYSTEM REQUIRES NO TOOLS

There's no metal-to-metal contact with patented leverless mount / demount tool. Demount and mount the most challenging tire and wheel combinations.

0-15 RPM VARIABLE SPEED TURNTABLE MOTOR

Exclusive inverter regulates rotational speed and slows as the stress on the bead increases, avoiding any damage to the tire.

STANDARD with THE R1200

- Integrated pneumatic wheel lift
- 3-position pedestal with self-locking plate - handle wheels with a 10" to 30" diameter
- Quick-lock rim clamping device with guard
- Easy to use 2-button controls
- Centering adapter / double conic
- Rubber turntable guard
- Pin protectors for centering pulling unit
- Power-assisted press arm seats bead to rim
- Foot pedal controls for inflation, rotation and wheel lift
- Inflation station
- Storage cabinet
- Tire paste lubricant and brush

OPTIONAL ACCESSORIES

VSG1000A158

Universal flange for reverse, and Chrome Clad wheels

VSG1000A152

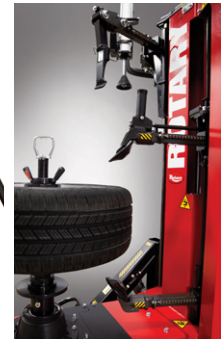
Light truck adapter for centering locking tire changer - 19.5" wheels

VSG1000A102

5 stud kit 110mm long for reverse rims. Used on VSG1000A158

VSG1000A86

Re-positionable side mirror



DUAL BEAD-BREAKING ROLLERS
Accurate and easy positioning and operation of both rollers and mount / demount tool.

R1200 LEVERLESS PRO services:



Optional equipment may be required



EASY TIRE MOUNTING

with plastic tool, dual rollers and power-assisted top bead press arm.



SCAN CODE FOR PRODUCT VIDEO

TECHNICAL DATA	R1200
Handle wheels from*	10"-26" / 12"-28" / 14"-30"
Maximum wheel width	19"
Maximum wheel diameter	45"
Bead breaker power (each arm)	2,645 Ft/L lbs
Bead breaker movement	Automatic / Manual indent
Rotation motor	2Hp / 1,5 Kw inverter
Recommended air supply	115-145 PSI / 8-10 bar
Power supply	220v / 1Ø / 60 Hz

* 3-position base can be adjusted to fit larger wheels up to 30"

R247D.CL CENTER LOCKING

HIGH VOLUME SWING ARM CHANGER

Easy to use center post mounting design increases productivity and reduces the risk of wheel damage. Comes standard with metal and plastic mounting and demounting heads.

The double-acting bead breaker cylinder is designed to work on low-profile and large steel or alloy rims.

VARIABLE SPEED CONTROL INVERTER

Avoid any tire damage by slowing rotational speed as the stress on the bead increases.

FEATURES

- Quick locking wheel centering system
- Integrated wheel lift
- Lower bead lifting roller
- Pneumatic top bead pressing tool
- Hand controlled side bead breaker
- Powerful 220v drive motor
- Storage cabinet
- Tire paste lubricant and brush

OPTIONAL ACCESSORIES

VSG1000A158

Universal flange for reverse, and Chrome Clad wheels

VSG1000A102

5 stud kit 110mm long for reverse rims. Used with VSG1000A158

VSG1000A152

Light truck adapter for centering locking tire changer - 19.5" wheels

VSG1000A11

Bead tire lever

VSG1000A18

Bead pushing roller



STANDARD PLASTIC TOOL HEAD

VSG800A60

Tool with support



INTEGRATED WHEEL LIFT

R247D.CL services:



Optional equipment may be required

TECHNICAL DATA	R247D.CL
Rim clamping	10"-30"
Maximum rim width	15"
Maximum tire diameter	47"
Max. bead breaker opening	15"
Bead breaker cylinder power at 145 psi	6,745 LBS
Rotation motor	2Hp / 1,5 Kw inverter
Recommended air supply	115-145 PSI / 8-10 bar
Power supply*	220v / 1Ø / 60 Hz VARIABLE SPEED

*SHIPS WITH NEMA L6 - 20 PLUG

R145DR

AUTOMATIC TILTBACK CHANGER

High performance, top-of-the-range tire changers model with double-acting bead breaker cylinder.

Designed for low-profile and large-sized steel or alloy rims. Works on any wheel up to a maximum width of 17".

GOOD FOR 19.5" RIMS

FEATURES

- 2 position centering lock / 10"-26" range
- Hand controlled bead breaker
- Double synchronization for load distribution
- Adjustable tool guide for alloy rim protection
- Bolt caps to prevent hooking of air hoses
- Integrated helper arm included
- Lower bead lifting roller
- Pneumatic top bead pressing tool
- Filter / Tire paste lubricant and brush

Invertor 0-16 Variable Speed Control Feature

Designed with an innovative electrical motor inverter, techs are able to regulate the chucking table rotation speed to reduce the stress on the bead to avoid any damage to the tire. 220V drive motor.

STANDARD ACCESSORIES

VSG800A117 (2 x kit)

Tool protection kit for metal mount / demount head

VSG800A6 (24" - 26")

Clamp Protectors (4 pcs)

VSG800A26

Blade with adjustment inclination. Allows to break the bead at the correct angle. 145D Model.

VSG800A11 Qty. of 1

Bead breaker protection

VSG800A11K Qty. of 5

OPTIONAL ACCESSORIES

VSG800A107 Fast Fit Motorcycle Adapters

+ 5" from outside

SMALL WHEEL ADAPTER VSG800A111

Reduces clamping capacity to 8" for ATVs and lawn equipment tires.
- requires VSG800A107 wheel clamps

STANDARD PLASTIC TOOL HEAD

VSG800A126

Tool with support



TILTBACK CHANGER
with helper arm

R145DR services:



Optional equipment may be required

TECHNICAL DATA	R145 / R145DR
Chuck rotation speed (rev/min)	0-16 rpm / 7,3 rpm (D version) 7,3 rpm (110v version)
Maximum torque to chuck	885 Ft/L bs (1200 Nm)
Self-centering lock: external	10" - 26"
Self-centering lock: internal	12" - 28,5"
Tool working span	8" - 32"
Maximum tire diameter	45" (1143mm)
Maximum tire width	17" (431mm)
Bead breaker cylinder power at 145 psi	6,745 Ft/L lbs (3060 kg)
Power supply* (Model 145DR) Motor	220v / 1Ø / 60 Hz / 1 Hp

*SHIPS WITH NEMA L6 - 20 PLUG

R146RP SWINGARM PRO

HIGH PERFORMANCE EXTRA-HEIGHT SPEEDCHANGER

The hand controlled R146RP includes an air-driven PLUS91SA HELPER ARM.*

This bead top pressing and tire lifting device for large and special tires features a lower bead lifting roller and pneumatic top bead pressing tool.

FEATURES

- Hand controlled, double-acting bead breaker
- Extra large 46" frame
- 110v drive motor supplies needed torque
- Air tank located in column
- Gear box is supported by steel plates to avoid flex
- Removable pedal assembly for easy maintenance
- Valve tray
- Tire paste lubricant and brush

STANDARD ACCESSORIES

PLASTIC TOOL HEAD

VSG800A60 Tool head with support

VSG800A117 Tool protection kit for metal mount / demount head (2 x kit)

VSG800A6 Clamp Protectors / 24" - 26" (4 pcs)

VSG800A11 Bead breaker protection / Qty. of 1

VSG800A11K / Qty. of 5



OPTIONAL ACCESSORIES

VSG800A107 Fast Fit Motorcycle Adapters + 5" from outside

SMALL WHEEL ADAPTER VSG800A111KIT

Reduces clamping capacity to 8" for ATVs and lawn equipment tires.
- requires VSG800A107 wheel clamps



Helper arm demounting lower bead

*NOTE: PLUS91SA IS NOT INSTALLED PRIOR TO DELIVERY

R146R Series services:



Optional equipment may be required

TECHNICAL DATA	R146 SERIES
External clamping	10" - 26"
Maximum torque to chuck	885 Ft/L bs (1200 Nm)
Internal clamping	12" - 28,5"
Max. tire diameter	45" (1143 mm)
Max. tire width	15" (380 mm)
Max. bead breaker opening	15" (380 mm)
Bead breaker cylinder power at 145 psi	6,745 Ft/L lbs (3060 kg)
Power supply	110v / 1Ø / 60 Hz

Site Requirements: 110V / 115-145 psi air supply

R501PLUS

SPEEDCHANGER HD

SUPER FAST TIRE CHANGER

Dismount and mount a truck tire in 30 seconds with 4 roller system

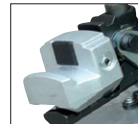
Simple tire dismounting: front bead-breakers keep the bead in the drop center while rear breakers continue until dismounting is complete.

Four roller system positioned on both sides of the wheel in opposite positions are supported by two separately controlled arms and each has two rollers - one conical which pushes on the bead and one cylindrical which pushes the side of the tire.

IDEAL FOR 19.5" RIMS

FEATURES

- Adjustable arm position
- Quick loading
- Hydraulic clamping / chucking table
- Stand-by function - no noise when not in operation
- Hydraulic controls
- Tire paste lubricant and brush



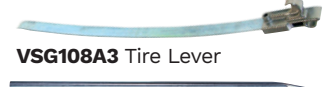
STANDARD CLAMP PROTECTOR VSG108A2
Protects aluminum wheels / 4x kit



VSG90A6
Aluminum rim clamp



VSG108A25
Steel rim clamp



VSG108A3 Tire Lever

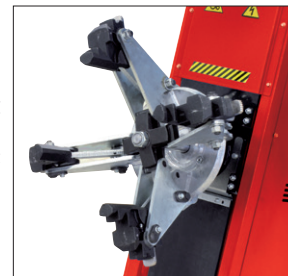


B5308000

Long bead lifting lever



HYDRAULIC CLAMPING
4" (90mm)
Min. clamping
13" (330mm)
Min. height



SERVICE TIRE DIAMETERS UP TO 52"

R501 PLUS services:



Optional equipment may be required

TECHNICAL DATA	R501PLUS
Chucking unit rotation motor	2.7 Hp / 2 kW
Hydraulic drive unit motor	1 Hp / 1.5 kW
Maximum tire diameter	52" (1320mm)
Max. tire width	21" (540mm)
Bead breaker power	13,300 Ft / Lbs / 18000 N
Maximum assembly weight	2,645 lbs / 1200 kg
Chuck rotation speed (rev/min)	8
Max. torque to chuck	585 Ft/Lbs / 2600 Nm
Power supply	220v / 3Ø / 60 Hz



SCAN CODE FOR PRODUCT VIDEO

R560 MOBILE HD

WORKSHOP SERVICE

Easy to use changer.

This easy-to-use changer is designed for closed vans or small workshops. Controls are protected on changer console and the hydraulic clamping and chucking table are suitable for agricultural tires with optional VSG108A22 wheel disc.

IDEAL FOR 19.5" RIMS

FEATURES

- Hydraulic clamping / chucking table
- Hydraulic up / down movement
- 4" minimum clamping - 13" minimum height
- Tire paste lubricant and brush



STANDARD CLAMP PROTECTOR VSG108A2
Protects aluminum wheels / 4x kit



VSG90A6
Aluminum rim clamp



VSG108A25
Steel rim clamp



STANDARD BEAD LEVER VSG108A3 Tire Lever



B5308000

Long bead lifting lever



STANDARD ROLLER for tubeless tires



SERVICE TIRE DIAMETERS UP TO 51"

R560 services:



Optional equipment may be required

TECHNICAL DATA	R560
Chucking unit rotation motor	1.5 Hp / 1.1 kW
Hydraulic drive unit motor	2.7 Hp / 2 kW
Rim diameter	11" - 27"
Maximum tire diameter	51" (1300mm)
Max. tire width	37.4" (950mm)
Bead breaker power	3,597 Ft/Lbs / 16000 N
Max assembly weight	2,645 lbs (1200 kg)
Chuck rotation speed (rev/min)	6.5
Max. torque to chuck	1253 Ft/Lbs (1700 Nm)
Power supply*	220v / 1Ø / 60 Hz



SCAN CODE FOR PRODUCT VIDEO

OPTIONAL ACCESSORIES

VSG108A22
Disc for wheels with lock ring

VSG108A24
Disc for wheels with lock ring / agricultural wheels

VSG108A34
Pneumatic bead pushing device

R541 COMMERCIAL HD

SINGLE CARRIAGE MOVEMENT

ELECTRO-HYDRAULIC CHANGER FOR TRUCKS, AGRICULTURAL AND EARTHMOVING VEHICLES

The two-speed rotation chucking table can accommodate rims up to 44" and up to 56" with VSG108A12 extensions set.

FEATURES

- Double ratcheting locking arm
- Rotational control on portable stand
- Tire paste lubricant and brush



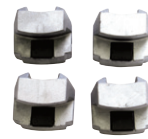
SERVICE TUBE and TUBELESS TIRES



SERVICE TIRE DIAMETERS UP TO 90"



HYDRAULIC ARM MOVEMENT



VSG108A2
Standard clamp protections for alloy rims / 4 x kit



VSG108A3 Tire Lever



B5308000
Long bead lifting lever



VSG90A6
Aluminum rim clamp



VSG108A25
Steel rim clamp

OPTIONAL ACCESSORIES

VSG108A24
Disc for wheels with lock ring / agricultural wheels

VSG108A34
Pneumatic bead pushing device

VSG108A12
Set of extensions to increase clamping capacity (4 x kit)

R541 services:



Optional equipment may be required

TECHNICAL DATA	R541
Chucking unit rotation motor	1.75 Hp / 1-1.3 kW
Hydraulic drive unit motor	2.95 Hp / 2.2 kW
Rim diameter	11" - 43"
With VSGA108A12 adapters	44" - 56"
Maximum tire diameter	90.5" (2300mm)
Maximum tire width	51" (1300mm)
Chuck rotation speed (rev/min)	4-8
Power supply	220v / 3Ø / 60 Hz

R573 EXTREME HD

SPECIAL ORDER TIRE CHANGER FOR EXTREME WHEEL DIMENSIONS

ELECTRO-HYDRAULIC CHANGER FOR TRUCKS, AGRICULTURAL AND EARTHMOVING VEHICLES

HIGH BEAD BREAKING FORCE

Easy tire mounting and demounting

MULTIPLE ADJUSTABLE GUIDES

Control rotation to avoid tire damage

STAND-BY FUNCTION

After 5 seconds the motor will turn off if not in use



HYDRAULIC CLAMPING

- 4" (90mm) min. clamping
 - 13" (330mm) min. height
- Service 19" and 22.5" wheels

Oversized chucking dimension allows reach to 50" wheels without extensions. Access wheels from 51" to 60" with optional VSG108A39 adapter extensions kit.



SERVICE TIRE DIAMETERS UP TO 106"



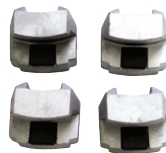
AUTOMATIC LIFTING and ROTATION



Portable, rotational control stand

FEATURES

- Console cable control unit with metal sheath
- Double speed table rotation
- Quick locking rotation tool
- Tire paste lubricant and brush



VSG108A2
Standard clamp protections for alloy rims / 4 x kit



VSG108A25
Steel rim clamp for earth-moving wheels



B5308000
Long bead lifting lever

OPTIONAL ACCESSORIES



VSG90A6
Aluminum rim clamp



VSG108A39
Set of extensions to increase clamping capacity (4 x kit)



VSG108A34
Pneumatic bead pushing device



VSG108A3 Tire Lever



VSG108A13 Rings Lever

R573BT CORDLESS CONTROLS

Communicates via Bluetooth® transmission

SPECIAL ORDER ONLY / Contact factory for details

R573 services:



Optional equipment may be required

TECHNICAL DATA	R573
Chucking unit rotation motor	2.95 Hp / 2.2 kW
Hydraulic drive unit motor	3.35 Hp / 2.5 kW
Rim diameter	11" - 50"
With VSGA108A39 adapters	51" - 60"
Maximum tire diameter	106" (2700mm)
Maximum tire width	69" (1750mm)
Chuck rotation speed (rev/min)	1 - 5 - 10
Power supply	220v / 3Ø / 60 Hz



Rotary's line of premium equipment is manufactured to the highest standards of quality and durability to help you perform the job right the first time, every time.

Offer your customers top quality tire and wheel service by putting Rotary to work for you.

Rotary Wheel Service Equipment

2700 Lanier Drive / Madison, IN 47250, USA

www.RotarySolutions.com



Sales:

1.812.273.1622 / 800.445.5438
insidesales@vsgdover.com

Government Sales:

800.445.5438 X5655

For additional information:

rotarylif.com/Government-Purchasing-Assistance/



Tech. Support:

800.445.5438
technicalsupport@rotarylif.com

Lit# Rotary Wheel Service Changers Brochure.2024.12

©2024 VEHICLE SERVICE GROUP, Printed in U.S.A., All Rights Reserved. Unless otherwise indicated, ROTARY, VEHICLE SERVICE GROUP, DOVER and all other trademarks are property of Dover Corporation and its affiliates.

Product specifications, part numbers, images and component descriptions are subject to change without notice or liability.



All Rotary Wheel Service Equipment carries an industry-leading 3 year warranty.

See website for details.