

SHELVING WITH SLOPED SHELVES



INDEX	PAGE(S)
Shelving with Sloped Shelves	106
Preconfigured Models . . .	107 - 109
Components	110 - 113

SHELVING WITH SLOPED SHELVES

Rousseau shelving with sloped shelves provides superior-quality gravity flow storage that integrates perfectly with other products in our Spider® range. This unique product on the market is available in a wide range of dimensions to fulfill your exact requirements.

With an average slope of 15 degrees, sloped shelves are perfect for rear-loading applications (flow rack). These units help to create a "first in, first out" (FIFO) system. Shelving units without rear access are also available for more conventional storage.

Sloped shelves provide optimum visibility for items stored on shelves above the user's eye level. For shelves below this level, the extra angle reduces visibility of the shelf contents. If visibility is more important than flow in your system, we recommend installing lower shelves at right angles (SH20 / 21).



SRE1F-EE750501 + SRG1F-EE750501



SRE1T-EE750502*

WHEN ORDERING, MODEL NUMBERS MUST BE COMPLETED AS FOLLOWS

H for posts with a smooth surface
R for posts with a perforated surface

S _ _ T-EE750401

SH SR Starter Unit Add-on Unit

BOLTED uprights D A

WELDED uprights E B

1 for open shelving
2 for closed shelving

e.g., SHD1T - EE750401

For an open shelving starter unit with smooth surface posts, bolted uprights 36"W, 24"D, 75"H and with four sloped shelves.

NOTE: A sloped shelf (SH27) can be replaced with a right-angled BOX shelf (SH20/21), see page 110.

OPEN AND CLOSED SHELVING

HERE ARE SOME OF OUR MOST POPULAR PRECONFIGURED MODELS OF SHELVING UNITS

- The preconfigured models in this section include open or closed uprights and sloped shelves
- The shelves have perforations for SH52 dividers and SH57 guides in 1½" increments c/c. Extra perforations have also been added on each side for aligning an SH52 divider or an SH57 guide with the side of the post (this part acts as a side edge and prevents interference between stored items and the post fold)
- SH52 dividers are available for 18"D and 24"D shelving only
- A sloped shelf can be replaced with a right-angled BOX shelf, see page 110
- The closed shelving preconfigured models in this section include back panels and a front base
- The open shelving preconfigured models in this section include a back brace

OPEN SHELVING



SRE1T-EE750501
Starter unit



SRB1T-EE750501
Add-on unit

CLOSED SHELVING



SRE2T-EE750501
Starter unit



SRB2T-EE750501
Add-on unit

DIMENSIONS			NUMBER OF SHELVES			
W	D	H	4	5	6	
36"	18"	75"	S _ _ T-EC750401	S _ _ T-EC750501	S _ _ T-EC750601	
	24"		S _ _ T-EE750401	S _ _ T-EE750501	S _ _ T-EE750601	
	30"		S _ _ T-EH750401	S _ _ T-EH750501	S _ _ T-EH750601	
	36"		S _ _ T-EJ750401	S _ _ T-EJ750501	S _ _ T-EJ750601	
	18"		87"	S _ _ T-EC870401	S _ _ T-EC870501	S _ _ T-EC870601
	24"			S _ _ T-EE870401	S _ _ T-EE870501	S _ _ T-EE870601
	30"	S _ _ T-EH870401		S _ _ T-EH870501	S _ _ T-EH870601	
	36"	S _ _ T-EJ870401		S _ _ T-EJ870501	S _ _ T-EJ870601	
	18"	99"		S _ _ T-EC990401	S _ _ T-EC990501	S _ _ T-EC990601
	24"			S _ _ T-EE990401	S _ _ T-EE990501	S _ _ T-EE990601
	30"		S _ _ T-EH990401	S _ _ T-EH990501	S _ _ T-EH990601	
	36"		S _ _ T-EJ990401	S _ _ T-EJ990501	S _ _ T-EJ990601	
42"	18"		75"	S _ _ T-GC750401	S _ _ T-GC750501	S _ _ T-GC750601
	24"			S _ _ T-GE750401	S _ _ T-GE750501	S _ _ T-GE750601
	30"	S _ _ T-GH750401		S _ _ T-GH750501	S _ _ T-GH750601	
	36"	S _ _ T-GJ750401		S _ _ T-GJ750501	S _ _ T-GJ750601	
	18"	87"		S _ _ T-GC870401	S _ _ T-GC870501	S _ _ T-GC870601
	24"			S _ _ T-GE870401	S _ _ T-GE870501	S _ _ T-GE870601
	30"		S _ _ T-GH870401	S _ _ T-GH870501	S _ _ T-GH870601	
	36"		S _ _ T-GJ870401	S _ _ T-GJ870501	S _ _ T-GJ870601	
	18"		99"	S _ _ T-GC990401	S _ _ T-GC990501	S _ _ T-GC990601
	24"			S _ _ T-GE990401	S _ _ T-GE990501	S _ _ T-GE990601
	30"	S _ _ T-GH990401		S _ _ T-GH990501	S _ _ T-GH990601	
	36"	S _ _ T-GJ990401		S _ _ T-GJ990501	S _ _ T-GJ990601	
48"	18"	75"		S _ _ T-HC750401	S _ _ T-HC750501	S _ _ T-HC750601
	24"			S _ _ T-HE750401	S _ _ T-HE750501	S _ _ T-HE750601
	30"		S _ _ T-HH750401	S _ _ T-HH750501	S _ _ T-HH750601	
	36"		S _ _ T-HJ750401	S _ _ T-HJ750501	S _ _ T-HJ750601	
	18"		87"	S _ _ T-HC870401	S _ _ T-HC870501	S _ _ T-HC870601
	24"			S _ _ T-HE870401	S _ _ T-HE870501	S _ _ T-HE870601
	30"	S _ _ T-HH870401		S _ _ T-HH870501	S _ _ T-HH870601	
	36"	S _ _ T-HJ870401		S _ _ T-HJ870501	S _ _ T-HJ870601	
	18"	99"		S _ _ T-HC990401	S _ _ T-HC990501	S _ _ T-HC990601
	24"			S _ _ T-HE990401	S _ _ T-HE990501	S _ _ T-HE990601
	30"		S _ _ T-HH990401	S _ _ T-HH990501	S _ _ T-HH990601	
	36"		S _ _ T-HJ990401	S _ _ T-HJ990501	S _ _ T-HJ990601	

PRECONFIGURED MODELS

BACK-TO-BACK OPEN AND CLOSED SHELVING

HERE ARE SOME OF OUR MOST POPULAR PRECONFIGURED MODELS OF SHELVING UNITS

- The preconfigured models in this section include open or closed uprights and sloped shelves
- The shelves have perforations for SH52 dividers and SH57 guides in 1½" increments c/c. Extra perforations have also been added on each side for aligning an SH52 divider or an SH57 guide with the side of the post (this part acts as a side edge and prevents interference between stored items and the post fold)
- SH52 dividers are available for 18"D and 24"D shelving only
- A sloped shelf can be replaced with a right-angled BOX shelf, [see page 110](#)
- The closed shelving preconfigured models in this section include back panels and front bases
- The open shelving preconfigured models in this section include a back brace

OPEN SHELVING



SRE1T-EE751001B
Starter unit

SRB1T-EE751001B
Add-on unit

CLOSED SHELVING



SRE2T-EE751001B
Starter unit

SRB2T-EE751001B
Add-on unit

DIMENSIONS			NUMBER OF SHELVES		
W	D*	H	8	10	12
36"	75"	36"	S__T-EC750801B	S__T-EC751001B	S__T-EC751201B
		48"	S__T-EE750801B	S__T-EE751001B	S__T-EE751201B
		60"	S__T-EH750801B	S__T-EH751001B	S__T-EH751201B
		72"	S__T-EJ750801B	S__T-EJ751001B	S__T-EJ751201B
	87"	36"	S__T-EC870801B	S__T-EC871001B	S__T-EC871201B
		48"	S__T-EE870801B	S__T-EE871001B	S__T-EE871201B
		60"	S__T-EH870801B	S__T-EH871001B	S__T-EH871201B
		72"	S__T-EJ870801B	S__T-EJ871001B	S__T-EJ871201B
	99"	36"	S__T-EC990801B	S__T-EC991001B	S__T-EC991201B
		48"	S__T-EE990801B	S__T-EE991001B	S__T-EE991201B
		60"	S__T-EH990801B	S__T-EH991001B	S__T-EH991201B
		72"	S__T-EJ990801B	S__T-EJ991001B	S__T-EJ991201B
42"	75"	36"	S__T-GC750801B	S__T-GC751001B	S__T-GC751201B
		48"	S__T-GE750801B	S__T-GE751001B	S__T-GE751201B
		60"	S__T-GH750801B	S__T-GH751001B	S__T-GH751201B
		72"	S__T-GJ750801B	S__T-GJ751001B	S__T-GJ751201B
	87"	36"	S__T-GC870801B	S__T-GC871001B	S__T-GC871201B
		48"	S__T-GE870801B	S__T-GE871001B	S__T-GE871201B
		60"	S__T-GH870801B	S__T-GH871001B	S__T-GH871201B
		72"	S__T-GJ870801B	S__T-GJ871001B	S__T-GJ871201B
	99"	36"	S__T-GC990801B	S__T-GC991001B	S__T-GC991201B
		48"	S__T-GE990801B	S__T-GE991001B	S__T-GE991201B
		60"	S__T-GH990801B	S__T-GH991001B	S__T-GH991201B
		72"	S__T-GJ990801B	S__T-GJ991001B	S__T-GJ991201B
48"	75"	36"	S__T-HC750801B	S__T-HC751001B	S__T-HC751201B
		48"	S__T-HE750801B	S__T-HE751001B	S__T-HE751201B
		60"	S__T-HH750801B	S__T-HH751001B	S__T-HH751201B
		72"	S__T-HJ750801B	S__T-HJ751001B	S__T-HJ751201B
	87"	36"	S__T-HC870801B	S__T-HC871001B	S__T-HC871201B
		48"	S__T-HE870801B	S__T-HE871001B	S__T-HE871201B
		60"	S__T-HH870801B	S__T-HH871001B	S__T-HH871201B
		72"	S__T-HJ870801B	S__T-HJ871001B	S__T-HJ871201B
	99"	36"	S__T-HC990801B	S__T-HC991001B	S__T-HC991201B
		48"	S__T-HE990801B	S__T-HE991001B	S__T-HE991201B
		60"	S__T-HH990801B	S__T-HH991001B	S__T-HH991201B
		72"	S__T-HJ990801B	S__T-HJ991001B	S__T-HJ991201B

NOTE: * The depth includes two units. e.g., 36"D = two 18"D units



SRK1F-EE750502*

WHEN ORDERING, MODEL NUMBERS MUST BE COMPLETED AS FOLLOWS

	Standalone Unit	Starter Unit	Add-on Unit	End Unit
BOLTED uprights	J	D	A	C
WELDED uprights	K	E	B	G

↓

SR_1F-EE750401

e.g., SRJ1F - EE750401

For an open shelving standalone unit with perforated posts, bolted uprights 36"W, 24"D, 75"H and with four sloped shelves.

NOTE: A sloped shelf (SH27) can be replaced with a right-angled BOX shelf (SH20/21), see page 110.

FIFO OPEN SHELVING

HERE ARE SOME OF OUR MOST POPULAR PRECONFIGURED MODELS OF SHELVING UNITS

- The preconfigured models in this section include open uprights and sloped shelves. These preconfigured models include two dividing guides per shelf. The guides can be adjusted in 1½" increments c/c.
- The shelves have perforations for SH52 dividers and SH57 guides in 1½" increments c/c. Extra perforations have also been added on each side for aligning an SH52 divider or an SH57 guide with the side of the post (this part acts as a side edge and prevents interference between stored items and the post fold)
- SH52 dividers are available for 18"D and 24"D shelving only
- A sloped shelf can be replaced with a right-angled BOX shelf, see page 110
- These preconfigured models include single or double corner gussets (depending on configuration)



SRK1F-DC750401
Standalone Unit



SRE1F-DC75041 Starter unit SRB1F-DC750401 Add-on unit SRG1F-DC750401 End unit

DIMENSIONS			NUMBER OF SHELVES		
W	D	H	4	5	6
36"	18"	75"	SR_1F-EC750401	SR_1F-EC750501	SR_1F-EC750601
			SR_1F-EE750401	SR_1F-EE750501	SR_1F-EE750601
			SR_1F-EH750401	SR_1F-EH750501	SR_1F-EH750601
			SR_1F-EJ750401	SR_1F-EJ750501	SR_1F-EJ750601
	24"	87"	SR_1F-EC870401	SR_1F-EC870501	SR_1F-EC870601
			SR_1F-EE870401	SR_1F-EE870501	SR_1F-EE870601
			SR_1F-EH870401	SR_1F-EH870501	SR_1F-EH870601
			SR_1F-EJ870401	SR_1F-EJ870501	SR_1F-EJ870601
	30"	99"	SR_1F-EC990401	SR_1F-EC990501	SR_1F-EC990601
			SR_1F-EE990401	SR_1F-EE990501	SR_1F-EE990601
			SR_1F-EH990401	SR_1F-EH990501	SR_1F-EH990601
			SR_1F-EJ990401	SR_1F-EJ990501	SR_1F-EJ990601
42"	18"	75"	SR_1F-GC750401	SR_1F-GC750501	SR_1F-GC750601
			SR_1F-GE750401	SR_1F-GE750501	SR_1F-GE750601
			SR_1F-GH750401	SR_1F-GH750501	SR_1F-GH750601
			SR_1F-GJ750401	SR_1F-GJ750501	SR_1F-GJ750601
	24"	87"	SR_1F-GC870401	SR_1F-GC870501	SR_1F-GC870601
			SR_1F-GE870401	SR_1F-GE870501	SR_1F-GE870601
			SR_1F-GH870401	SR_1F-GH870501	SR_1F-GH870601
			SR_1F-GJ870401	SR_1F-GJ870501	SR_1F-GJ870601
	30"	99"	SR_1F-GC990401	SR_1F-GC990501	SR_1F-GC990601
			SR_1F-GE990401	SR_1F-GE990501	SR_1F-GE990601
			SR_1F-GH990401	SR_1F-GH990501	SR_1F-GH990601
			SR_1F-GJ990401	SR_1F-GJ990501	SR_1F-GJ990601
48"	18"	75"	SR_1F-HC750401	SR_1F-HC750501	SR_1F-HC750601
			SR_1F-HE750401	SR_1F-HE750501	SR_1F-HE750601
			SR_1F-HH750401	SR_1F-HH750501	SR_1F-HH750601
			SR_1F-HJ750401	SR_1F-HJ750501	SR_1F-HJ750601
	24"	87"	SR_1F-HC870401	SR_1F-HC870501	SR_1F-HC870601
			SR_1F-HE870401	SR_1F-HE870501	SR_1F-HE870601
			SR_1F-HH870401	SR_1F-HH870501	SR_1F-HH870601
			SR_1F-HJ870401	SR_1F-HJ870501	SR_1F-HJ870601
	30"	99"	SR_1F-HC990401	SR_1F-HC990501	SR_1F-HC990601
			SR_1F-HE990401	SR_1F-HE990501	SR_1F-HE990601
			SR_1F-HH990401	SR_1F-HH990501	SR_1F-HH990601
			SR_1F-HJ990401	SR_1F-HJ990501	SR_1F-HJ990601

COMPONENTS

SHELVES AND SHELF ACCESSORIES

SLOPED SHELF

SH27



- For gravity flow storage ("first in, first out" – FIFO)
- Approx. 15° angle slope
- Includes a heavy-duty front edge to keep stored items in place. Front edge height: 1 3/8"
- 20ga steel shelves (painted steel)
- Shelf is placed on galvanized steel side supports (included)
- Includes perforations for SH52 dividers and SH57 dividing guides in 1 1/2" increments c/c
- SH52 dividers are available for 18"D and 24"D shelving only
- Extra perforations have been added to the sides to optimize alignment of the divider or guide with the post and to prevent stored items from falling
- Height can be adjusted in 1" increments, except if SR35 or SR36 corner gussets are used (in which case, can be adjusted in 2" increments)
- Sloped shelves and non-sloped SH20 and SH21 BOX shelves can be combined in the same unit

- Sloped shelf load capacity: 450lb.
- Compatible with:
 - SH99 base for mobile shelving
 - SH41, SH43, SH91 and SH93 doors with frame*
 - SH85 flipper door directly underneath an SH27 shelf*
 - Drawers directly underneath an SH27 shelf*
 - SH28 base
 - SH81 and SH82 label holders
 - SH37, SH38, SH66, SH68, SH69 and SR79 panels

PRODUCT NO.	W x D	PRODUCT NO.	W x D
SH27-3018	30" x 18"	SH27-4218	42" x 18"
SH27-3024	30" x 24"	SH27-4224	42" x 24"
SH27-3030	30" x 30"	SH27-4230	42" x 30"
SH27-3036	30" x 36"	SH27-4236	42" x 36"
SH27-3618	36" x 18"	SH27-4818	48" x 18"
SH27-3624	36" x 24"	SH27-4824	48" x 24"
SH27-3630	36" x 30"	SH27-4830	48" x 30"
SH27-3636	36" x 36"	SH27-4836	48" x 36"

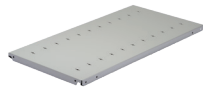
NOTES: Not compatible with the following products: SH50 divider, SH56 dividing rod, SH65 and SH67 panels for plastic bins, SH35 corner gussets.

*Not compatible with SR35 and SR36 corner gussets.

One SH2A reinforcements increase the BOX shelf's rigidity (but do not increase the shelf's load capacity).

BOX SHELF

SH20 / SH21



SH60

- BOX-type shelf with roll-formed and welded front and back edges
- 20ga steel. Thickness: 1 3/4"
- Includes four sturdy and compact SH60 clips
- Includes perforations spaced 3" apart c/c for installing SH52 dividers
- SH52 dividers are available for 18"D and 24"D shelving only
- To order: Complete the product number with the width required: 30", 36", 42" or 48"
- SH20: Reinforcements are available for these shelves
- SH21*: To see load capacities and shelf reinforcements available, refer to the following table

PRODUCT NO.	DEPTH
SH20-__18	18"
SH20-__24	24"
SH21-__30*	30"
SH21-__36*	36"

NOTE: * Double bend on the sides.

SH21 SHELF LOAD CAPACITY*

Visual distortion is reduced if an SH26 reinforcement and two SH23 reinforcements are used on the shelf.

SHELVES	CAPACITY WITHOUT REINFORCEMENT	CAPACITY WITH SH23 REINFORCEMENT	CAPACITY WITH SH23 & SH26 REINFORCEMENT
SH21-3030	575	925	—
SH21-3036	425	825	—
SH21-3630	600	800	—
SH21-3636	425	800	—
SH21-4230	625	—	850
SH21-4236	525	—	775
SH21-4830	500	—	800
SH21-4836	500	—	800

GUIDES



- Guides for sloped shelves (version 01) can be used to guide items all the way down the shelf
 - Width can be adjusted in 1½" increments
 - The front of the guide slots into the bend at the front of the shelf
 - The guide is held at the back by a plastic end piece that screws into the shelf holes
 - 18"D and 24"D guides use aluminum rods, while 30"D and 36"D guides use stainless steel rods

- Dividing guides for BOX shelves (version 02) can be used to separate items
 - Width can be adjusted in 3" increments
 - The guide is held at the front and back by a plastic end piece that screws into the shelf holes
 - 18"D and 24"D guides use aluminum rods, while 30"D and 36"D guides use stainless steel rods
- Heavy-duty black plastic end pieces

DIMENSIONS	PRODUCT NO.	
	SLOPED SHELF	BOX SHELF
18"	SH57-1801	SH57-1802
24"	SH57-2401	SH57-2402
30"	SH57-3001	SH57-3002
36"	SH57-3601	SH57-3602

STRUCTURAL COMPONENTS

POST

SR10 / SH10



- Tubular T shape provides up to seven fixing zones
- Includes perforations spaced 1" apart c/c on each side for easy adjustment of shelves
- 14ga steel
- Options:
 - SR10 universal post with perforated front surface for adding mini-racking units. Compatible with SR35 and SR36 corner gussets
 - SH10 shelving post with smooth front surface for a neater finish. Not compatible with SR35 and SR36 corner gussets

SR UNIVERSAL POST	SH SHELVING POST	HEIGHT
SR10-039	SH10-039	39"
SR10-051	SH10-051	51"
SR10-075	SH10-075	75"
SR10-087	SH10-087	87"
SR10-099	SH10-099	99"
SR10-111	SH10-111	111"
SR10-123	SH10-123	123"

NOTES: The maximum height for FIFO use (with SR35 and SR36 corner gussets) is 99".

WELDED OPEN UPRIGHT

SR11 / SH11



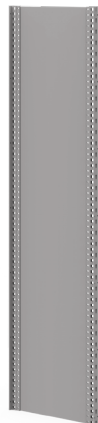
- Upright with factory-welded side braces
- Enables faster assembly
- To order: Complete the product number with the depth required: 18", 24", 30" or 36"
- Options:
 - SR11 open upright with perforated front surface for adding mini-racking units. Compatible with SR35 and SR36 corner gussets
 - SH11 open upright with smooth front surface for a neater finish. Not compatible with SR35 and SR36 corner gussets

SR UNIVERSAL POST	SH SHELVING POST	HEIGHT
SR11-__0752	SH11-__0752	75"
SR11-__0872	SH11-__0872	87"
SR11-__0992	SH11-__0992	99"

NOTE: The maximum height for FIFO use (with SR35/SR36 corner gussets) is 99".

WELDED CLOSED UPRIGHT

SR12 / SH12



- Upright with full-height factory-welded panel
- Enables faster assembly
- To order: Complete the product number with the depth required: 18", 24", 30" or 36"
- Options:
 - SR12 closed upright with perforated front surface for adding mini-racking units. Compatible with SR35 and SR36 corner gussets
 - SH12 closed upright with smooth front surface for a neater finish. Not compatible with SR35 and SR36 corner gussets

SR UNIVERSAL POST	SH SHELVING POST	HEIGHT
SR12-__075	SH12-__075	75"
SR12-__087	SH12-__087	87"
SR12-__099	SH12-__099	99"

NOTE: The maximum height for FIFO use (with SR35 and SR36 corner gussets) is 99".



COMPONENTS

SHELF FRONT OR FRONT BASE SH28



- Same component used for both applications
- Quick and easy hook-on installation
- To order: Complete the product number with the width required: 30", 36", 42" or 48"

PRODUCT NO.	HEIGHT
SH28-__02	2"
SH28-__05	5"

NOTE: The 2"H front base is always included with closed shelving preconfigured models (except the ones with sliding panels).

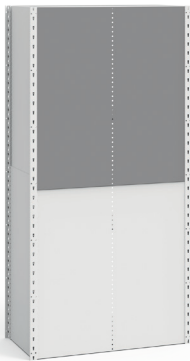
SIDE PANEL SH30



- Panel combinations:
 - 75"H posts (39"H + 39"H)
 - 87"H posts (39"H + 51"H)
 - 99"H posts (51"H + 51"H)
 - 111"H posts (39"H + 39"H + 39"H)
 - 123"H posts (39"H + 39"H + 51"H)
- To order: Complete the product number with the depth required: 18", 24", 30" or 36"

PRODUCT NO.	HEIGHT
SH30-__39	39"
SH30-__51	51"

BACK PANEL SH31



- Panel combinations:
 - 75"H posts (39"H + 39"H)
 - 87"H posts (39"H + 51"H)
 - 99"H posts (51"H + 51"H)
 - 111"H posts (39"H + 39"H + 39"H)
 - 123"H posts (39"H + 39"H + 51"H)
- To order: Complete the product number with the width required: 30", 36", 42" or 48"

PRODUCT NO.	HEIGHT
SH31-__39	39"
SH31-__51	51"

BACK SWAY BRACE SH33



- X-shaped factory-assembled brace
- Easy to install
- Recommendations:
 - For 99"H uprights and shorter: one brace
 - For uprights higher than 99": two braces

PRODUCT NO.	WIDTH
SH33-30	30"
SH33-36	36"
SH33-42	42"
SH33-48	48"

NOTES: Please refer to technical guide S58 or contact your customer service representative for exact placement of the brace.

Do not use with FIFO shelving. Replace with SR35 and SR36 corner gusset kits.

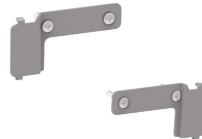
SIDE BRACES SH34



- Sold in pairs
- Enables uprights to be attached in a "ladder" for easier assembly
- Recommendations:
 - 99"H uprights or shorter: one pair of side braces
 - For uprights higher than 99"H: please refer to technical guide S58 or contact your customer service representative

PRODUCT NO.	DEPTH
SH34-18	18"
SH34-24	24"
SH34-30	30"
SH34-36	36"

SINGLE CORNER GUSSET KIT SR35



- Replaces a back sway brace to provide full access to the front and rear of the shelving
- For use with an end-of-aisle post or a common post with shelves side by side and offset by at least 4" in height
- Does not allow two shelves side by side at the same height
- Installs at the front and back of the post Compatible with SH20, SH21 and SH27 shelves
- For use with SR uprights and posts only
- Not compatible with doors with frame, drawers, roll-out shelves and flipper doors

PRODUCT NO.	
SR35-02	1 pair
SR35-04	2 pairs

NOTES: A minimum of three kits of two SR35 or SR36 gussets per post is required to provide proper lateral bracing.

Not to be used for shelving over 99"H, multi-level shelving or double shelf reinforcements (SHC2).

DOUBLE CORNER GUSSET KIT

SR36



- Replaces sway brace to provide full access to the front and rear of the shelving
- For use with a common post with shelves side by side at the same height
- Installs at the front and back of the post
- Compatible with SH20, SH21 and SH27 shelves
- For use with SR uprights and posts only
- Not compatible with doors with frame, drawers, roll-out shelves and flipper doors

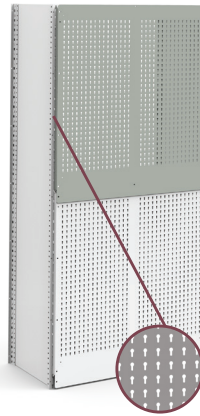
PRODUCT NO.

SR36-02 1 pair

NOTES: A minimum of three kits of two SR35 or SR36 gussets per common post is required to provide proper lateral bracing.
Not to be used for shelving over 99"H, multi-level shelving or double shelf reinforcements (SHC2).

STRUCTURAL BACK UTILITY PANEL

SH79



- Utility panel for the backs of shelving
- Forms an integral part of the shelving structure
- Holes spaced 1" apart c/c
- Load capacity: maximum 250lb. per panel
- Compatible with WM9F, WM9G, WM9H, WM9J and WM9L light-duty hooks, and WM9A and WM9B heavy-duty hooks
- Compatible with WM9C bin rails, WM9D can holders, WM9M and WM9N hooks, WM9Q tool holders, WM9P spool and roll holders, WM9R hammers support, WM9S document holder
- Panel combinations:
 - 75"H posts (39"H + 39"H)
 - 87"H posts (39"H + 51"H)
 - 99"H posts (51"H + 51"H)
- To order: Complete the product number with the width required: 30", 36", 42" or 48"

PRODUCT NO. **HEIGHT**

SH79-__39 39"

SH79-__51 51"

NOTE: Used without SH31 back panels.

INSTALLATION ACCESSORIES

FLOOR ANCHOR PLATE

SH45



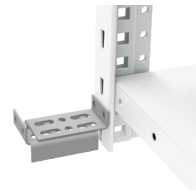
- Sold individually
- Attaches to the post for anchoring shelving sections to the ground. Distributes the load over a larger surface and protects the floor
- 12ga galvanized steel

PRODUCT NO.

SH45

WALL SPACER

SR47



- Anchors shelving to the wall
- Adjusts from 3" to 4"
- Wall anchoring hardware not included (holes are 5/16" dia.)

PRODUCT NO.

SR47-0304

SHIM PLATE

SH46



- Sold individually
- Levels shelving units on uneven surfaces
Slides under SH45 floor anchor plates
- 12ga or 16ga galvanized steel

PRODUCT NO. **THICKNESS**

SH46-12 12 gauge (0,100")

SH46-16 16 gauge (0,060")

LEVELING GLIDES KIT

SR49



- Sold in pairs
- Adjusts the height of Spider® Shelving units from 1 1/4" to 2 1/8" on uneven surfaces
- Load capacity: maximum 750lb. per glide
- Restrictions:
 - Only compatible with 99"H shelving or shorter
 - Only compatible with SR uprights and posts
 - Not compatible with RF32 and RF36 modular drawers, RF41 and RF45 roll-out shelves and SH28 bases

PRODUCT NO.

SR49-01

FLOOR ANCHORING HARDWARE

SH47



- Used for anchoring shelving to the floor;
- Includes 4 cement screws.

PRODUCT NO.

SH47-04